

Bore Reflector/Flag Safety:

Your cleaning system may include a bore reflector/flag safety. It can be used to illuminate the barrel to check the bore. It also doubles as a flag safety to indicate the firearm is unloaded. Simply insert into the chamber and close the bolt.

1. Bore Reflector



2. Flag Safety

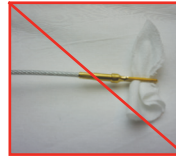


Patch Assembly Instructions:

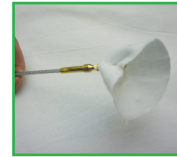
DO NOT SLIDE THE PATCH THROUGH THE SLOTTED TIP. *Please read the enclosed instructions before using this gun cleaning system. Failure to read and follow instructions may cause inadequate results.*

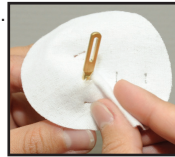


1. Insert slotted tip in a slot in the patch.
2. Take a pinch on the patch, pinching upward, slide it through the slot in the tip and pull tight. *Note: The closer you pinch to the slotted tip, the smaller the swab. See illustration under **Proper Patch Use** for where to pinch to make the proper size swab.*
3. Tighten the swab by tugging on the top of the patch.

INCORRECT



CORRECT



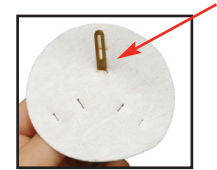
1. 
2. 
3. 

Proper Patch Use

3" Cleaning Patches

Use large slotted tip and inner slots in patch for .30 Cal./7.62MM caliber firearms

Pinch here for .30 Cal./7.62MM



RED ARMY STANDARD

CLEANING INSTRUCTIONS

1.800.527.1252

WWW.REDARMYSTANDARD.COM

IMPORTANT! Read and understand the cleaning instructions for your firearm before cleaning.

WARNING! Before beginning the cleaning process, check to ensure the rifle is unloaded.

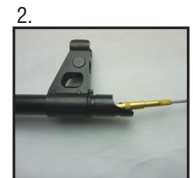
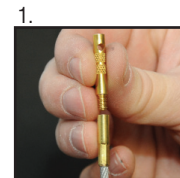
WARNING! You should wear eye protection, such as shooting glasses or goggles, when cleaning your firearm to protect your eyes from tensioned parts, such as springs, that may become dislodged during disassembly.

LEAD WARNING! Discharging firearms in poorly ventilated areas, cleaning firearms or handling ammunition may result in exposure to lead and other substances known to cause birth defects, reproductive harm and other serious injuries. Have adequate ventilation at all times when shooting. Wash hands thoroughly after exposure.

Bore Obstruction Removal Instructions:

Obstruction remover(s) may be included to assist in removal of stuck cases, mud, snow, and other bore obstructions.

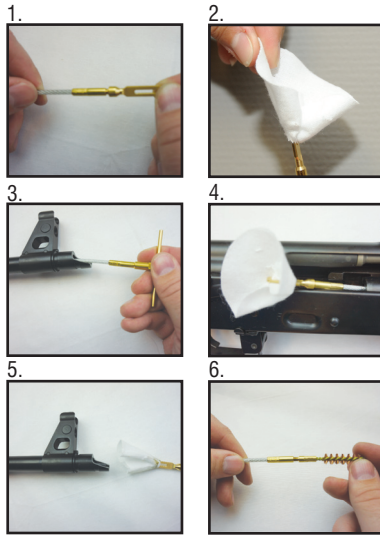
1. Attach the obstruction remover to the end of a Memory-Flex® cable.
2. Insert down the muzzle of the barrel.
3. Tap the obstruction rapidly to loosen.
4. You may need to run a patch to remove any debris the obstruction may have left behind.



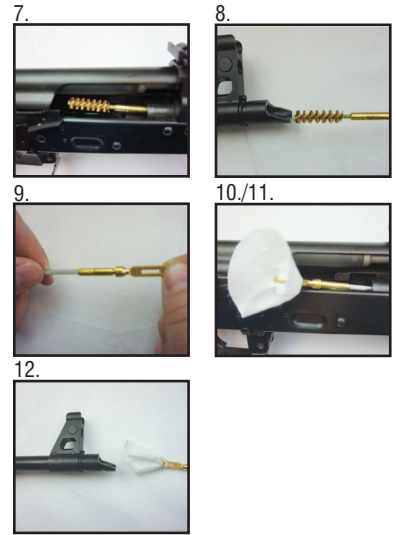
Bore Cleaning:

Prior to cleaning, be sure the firearm is unloaded.

1. Assemble slotted tip and obstruction remover to Memory-Flex® cable.
2. Create a swab for your firearm. **Refer to the Patch Assembly Instructions** and the **Proper Patch Use** sections on the reverse side.
3. Insert cable, obstruction remover end first, in the chamber and feed out the muzzle. Insert T-handle bar into the obstruction remover.
4. Place a couple drops of solvent on the swab.
5. Pull through from Breech-to-Muzzle®.
6. Remove the patch and slotted tip and replace with a bore brush.



7. Insert cable, obstruction remover end first, in the chamber and feed out the muzzle. Insert T-handle bar into the obstruction remover.
8. Pull through from Breech-to-Muzzle®.
9. Remove bore brush and replace with slotted tip.
10. Create a swab for your firearm (using a new cleaning surface). **Refer to the Patch Assembly Instructions** and the **Proper Patch Use** sections on the reverse side.
11. Insert cable, obstruction remover end first, in the chamber and feed out the muzzle. Insert T-handle bar into the obstruction remover.
12. Pull through from Breech-to-Muzzle®.
13. Repeat steps 1-12 as necessary until clean.



AK Series Maintenance Tools

Suggested uses include:

Short AP Brush	Pin Punch	Brass Scraper	Gas Tube Brush	Gas Tube Mop	Male Rod	Female Rod	Chamber Flex Cable	Chamber Brush
Cleans the receiver/ internals, piston, cam groove, bolt, bolt carrier and firing pin.	Used to remove firing pin retaining pin and extractor retaining pin. Can be used to remove the FCG and clean gas port.	Cleans the bolt, bolt face, piston, muzzle crown and any other flat areas.	Cleans heavy fouling in the gas tube.	Swabs remaining fouling from the gas tube after cleaning.	Can be used in conjunction with Female Rod, Obstruction Remover, T-Handle and Gas Tube Brush/Mop to clean gas tube and gas block.	Used to extend the components for added reach.	Used in conjunction with chamber brush and Female Rod to clean the chamber area.	Used to clean the chamber and trunnion from the breech end.

Chamber Flex Cable and Chamber Brush.

